

COURSE REPORT

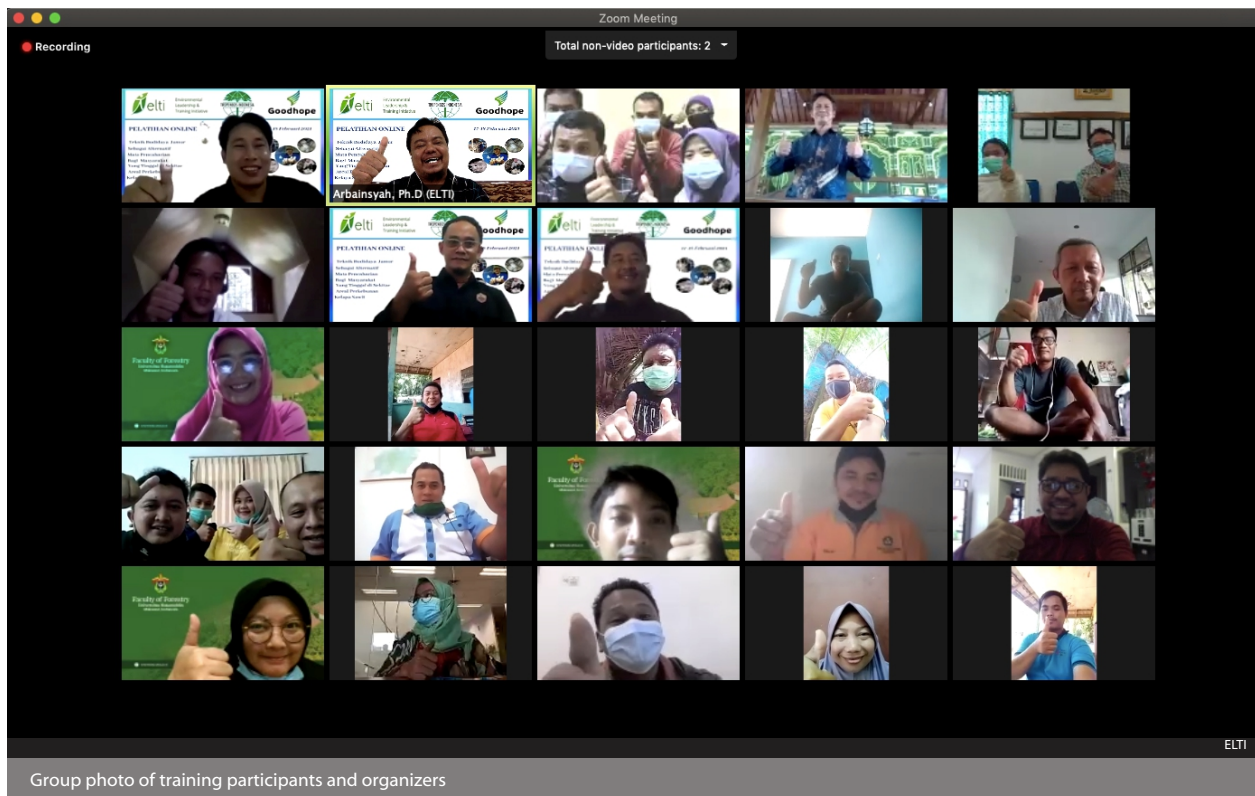
Environmental
Leadership &
Training Initiative

INTRODUCING OYSTER AND STRAW MUSHROOM CULTIVATION TECHNIQUES FOR COMMUNITIES AROUND OIL PALM PLANTATIONS

February 17-18, 2021

Samboja, East Kalimantan, Indonesia

An online course co-organized by:
Environmental Leadership & Training Initiative (ELTI),
Tropenbos Indonesia Program (TBI),
Goodhope Asia Holdings Ltd.



Background: The Roundtable on Sustainable Palm Oil requires that member companies protect, manage, and restore High Conservation Value (HCV) areas within their plantations. These areas include, but are not limited to, areas with “concentrations of biological diversity including endemic species, and rare, threatened or endangered species, that are significant at global, regional or national levels.” Because these areas cannot be converted for plantation establishment, companies are forced to look for other ways to benefit from these

ELTI is an initiative of: **Yale SCHOOL OF THE ENVIRONMENT**



areas themselves or in unison with local communities. One possible source of alternative livelihoods is mushroom production.

Mushrooms have long been used by humans both as a food source and as a medicinal ingredient. There are many types of mushrooms that can be cultivated for these purposes. Two of the most common species in Indonesia are Oyster and Straw mushrooms, although the consumption of mushrooms remains quite low. Cultivation of these two species of mushrooms is already being practiced in a very limited number of areas in the country, particularly on Java, but has not been widely disseminated.

This online training was intended to provide participants who live in and around HCV forest areas within oil palm plantations with all of the knowledge, skills, and techniques needed to engage in mushroom cultivation as an alternative livelihood. Oil palm plantations are a good location for mushroom production given the prevalence of wood waste and sawdust that can serve as a growing medium for the mushrooms.

Course Objectives:

- To provide an understanding of biodiversity-based and conservation-oriented economic enterprises
- To provide the knowledge and skills needed to engage in mushroom cultivation
- To promote mushroom cultivation as an alternative livelihood in order to reduce pressure on HCV forest areas in oil palm plantations

Course Format:

The course was facilitated by Arbainsyah and Sulton Afifudin from ELTI and Mr. Abrar Ramlan and Mr. Henry Putranto from Goodhope and took place over two consecutive days.



Module 1:

- Opening
- Basic information about edible mushroom cultivation
- Straw mushroom cultivation techniques
- Discussion

Module 2:

- Oyster mushroom cultivation techniques
- Marketing and distribution strategy
- Discussion
- Closing



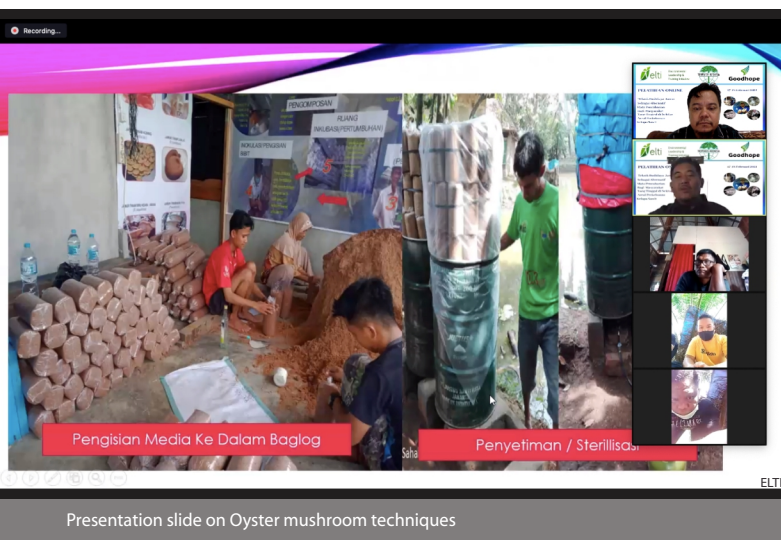
Online course materials included interactive presentations and videos that were made available via a WhatsApp group platform. Live sessions with the resource people were held on Zoom. A reference booklet, entitled *"Introducing Oyster and Straw Mushroom Cultivation Techniques"*, was made available to participants.

Course Participants:

A total of 53 participants attended the online training. The majority of participants represented palm oil companies from the following provinces and cities in Indonesia:

- West Kalimantan: PT Sawit Mitra Abadi and PT. Sumber Hasil Prima
- Central Kalimantan: PT Agro Bukit, PT Agro Indomas, PT Agro Wana Lestari, PT Dwie Warna Karya and PT Sawit Sumbermas Sarana
- East Kalimantan: PT Agro Indomas
- South Kalimantan: PT Kharisma Inti Usaha
- Jakarta: PT Agro Harapan Lestari, PT Andes Agro Investama, PT Genteng Plantation Nusantara and KPN Plantation
- Papua: PT Nabire Baru

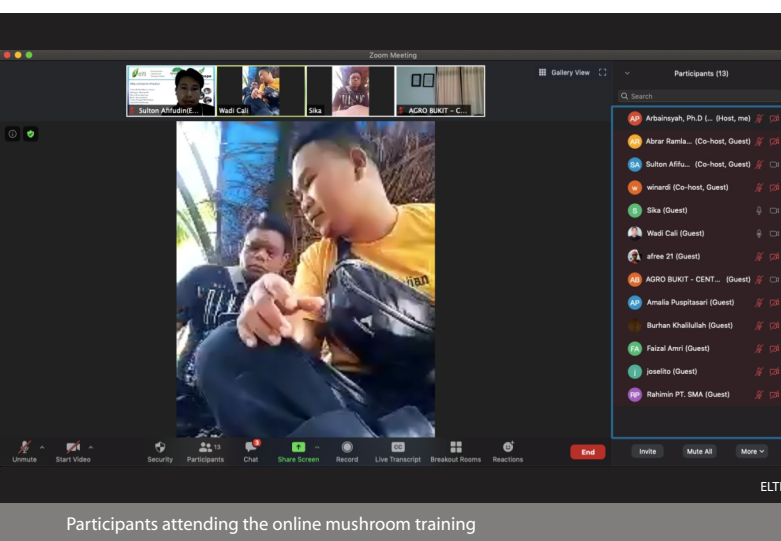




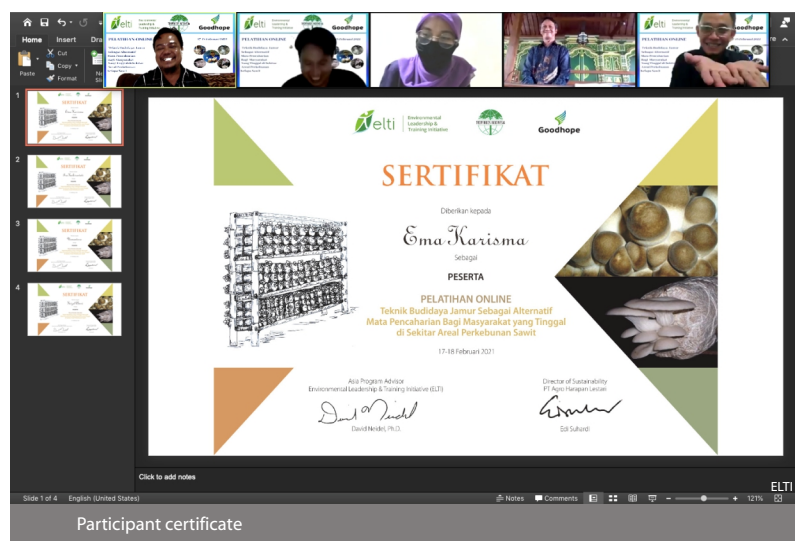
Presentation slide on Oyster mushroom techniques



Presentation slide on mushroom products



Participants attending the online mushroom training



Participant certificate

The training was also attended by representatives from government institutions (i.e., SMKN 1 Bukit Santuai and SMKN 1 Danau Sembuluh), a community group (i.e., Desa Terawan), NGOs from Bogor (i.e., PILI-Green Network, Ecotrop and Tropenbos Indonesia) and a consulting firm (i.e. Daemeter). There was also one participant who attended by special arrangement from Visayas State University, ELTI's partner organization in the Philippines.

Follow-up:

Participants, many of whom participated in the training as part of a group, have started practicing Oyster and Straw mushroom cultivation techniques at their respective oil palm plantation locations. A WhatsApp group was established during the training so that participants could actively follow up with each other, as well as with the organizers. Some of the training participants have also asked ELTI for continued support through the Leadership Program.