

COURSE REPORT

MANAGEMENT AND MONITORING OF HCV-HCS FOREST IN OIL PALM PLANTATIONS

June 7-9, 2021

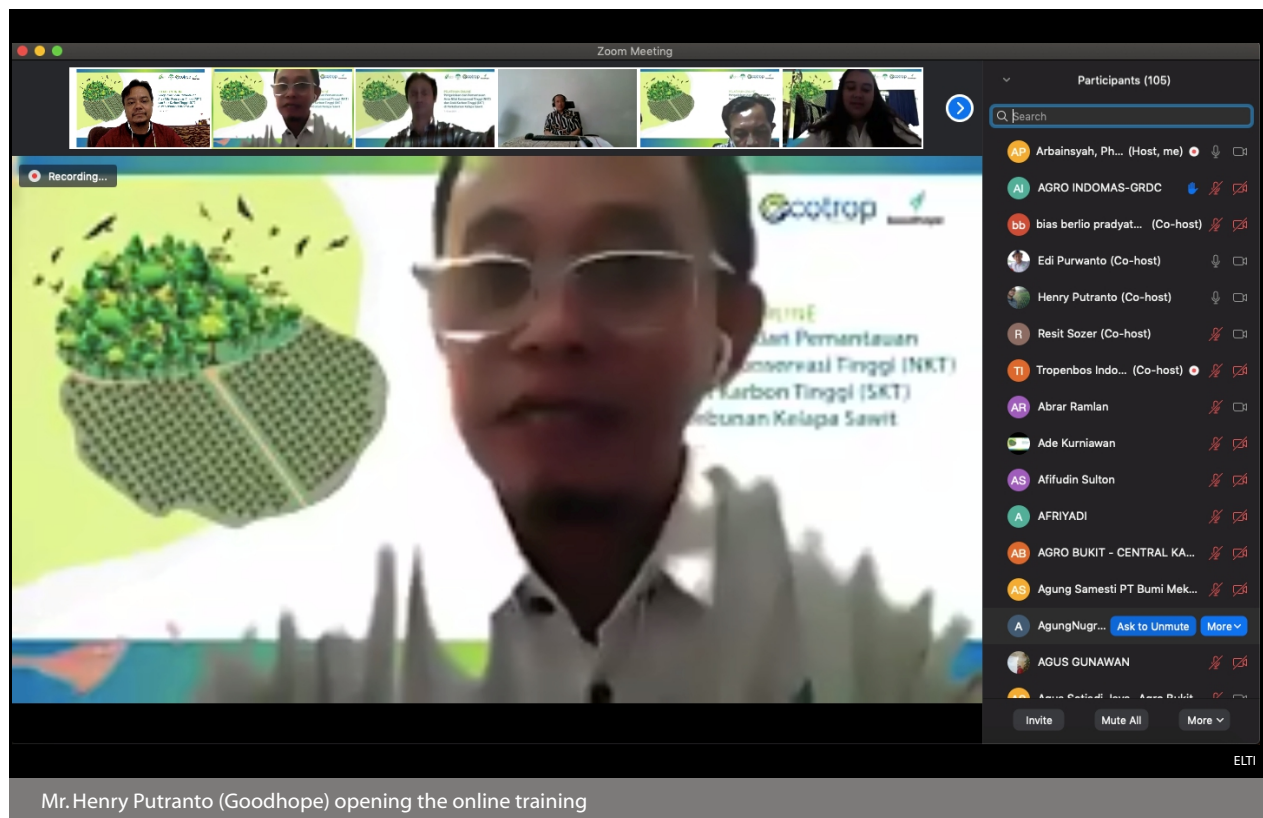
Samboja, East Kalimantan, Indonesia

An online course co-organized by:
Environmental Leadership & Training Initiative (ELTI),
Tropenbos Indonesia Program (TBI),
Goodhope Asia Holdings Ltd. and
Ecotrop



Background: This online training program aimed to introduce the concepts and best management practices for High Conservation Values (HCV)- High Carbon Stocks (HCS). The conservation of HCV and HCS are a key requirement for oil palm plantations to achieve sustainability certification through the Roundtable on Sustainable Palm Oil (RSPO) and/or other certification schemes. The HCV concept was developed and first implemented in 1999 by the Forest Stewardship Council to maintain and enhance environmental and social values in production landscapes. HCV focuses on six areas: species diversity; ecosystems; mosaics at the

ELTI is an initiative of: **Yale SCHOOL OF THE ENVIRONMENT**



landscape level and intact forest landscapes; ecosystem and habitat; ecosystem services; and community needs and cultural values. The newer HCS approach was developed and launched in 2013 by palm oil company Golden Agri-Resources (GAR), Greenpeace, and The Forest Trust as a way to monitor GAR's no-deforestation commitment. HCS provides a methodology to distinguish between viable natural forests and heavily degraded areas that could be converted to oil palm. The overlap of these concepts has led to some confusion and for many oil palm plantations, the knowledge and skills needed to set up a HCV-HCS management and monitoring system fall outside their area of expertise. Hence, this online training program was developed to address this clear capacity development need.

Course Objectives:

- To provide a general introduction to the HCV-HCS concepts and approaches;
- To describe common threats to HCV-HCS forest areas;
- To introduce the management and monitoring systems need to achieve the goals of conserving HCV-HCS.

Course Format:

The course was facilitated by Dr. Arbainsyah and Mr. Sulton Afifudin from ELTI and Mr. Abrar Ramlan and Mr. Henry Putranto from Goodhope. The course was divided into three thematic modules, each of which was covered during one of the three days of the online training.



Module 1:

- Opening
- Introduction to the concepts and methods for identifying HCV-HCS
- Discussion

Module 2:

- Management of HCV-HCS
- Discussion

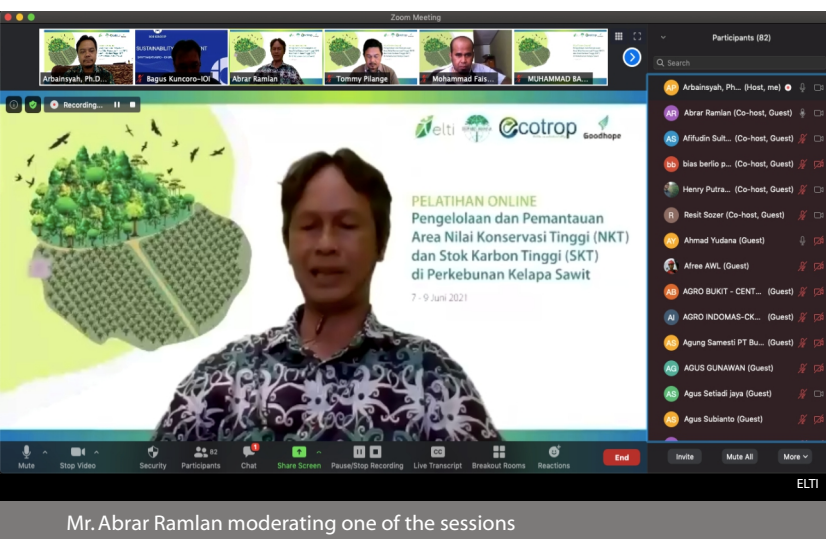
Module 3:

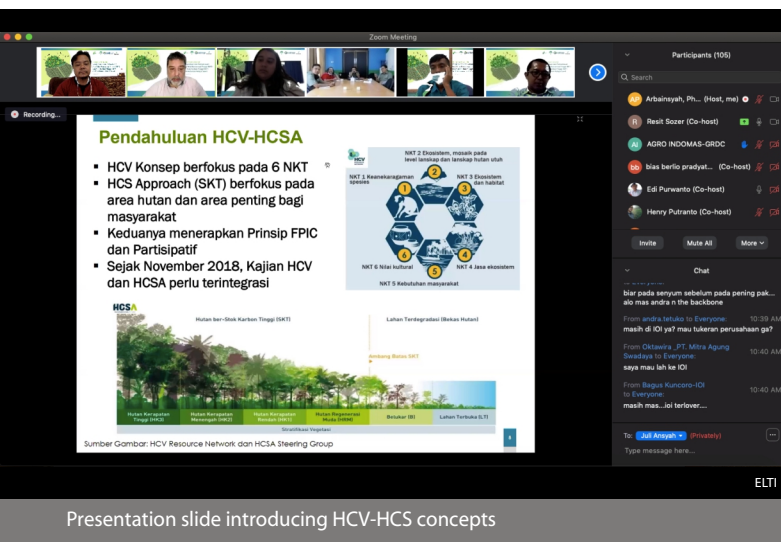
- Monitoring of HCV-HCS
- Discussion
- Closing

The online course materials included interactive presentations and videos that were made available via a WhatsApp group platform. Live sessions with the resource people were held on Zoom. A reference handout, entitled *"Management and Monitoring of HCV-HCS Forest in Oil Palm Plantations,"* was also produced and made available to participants in PDF format.

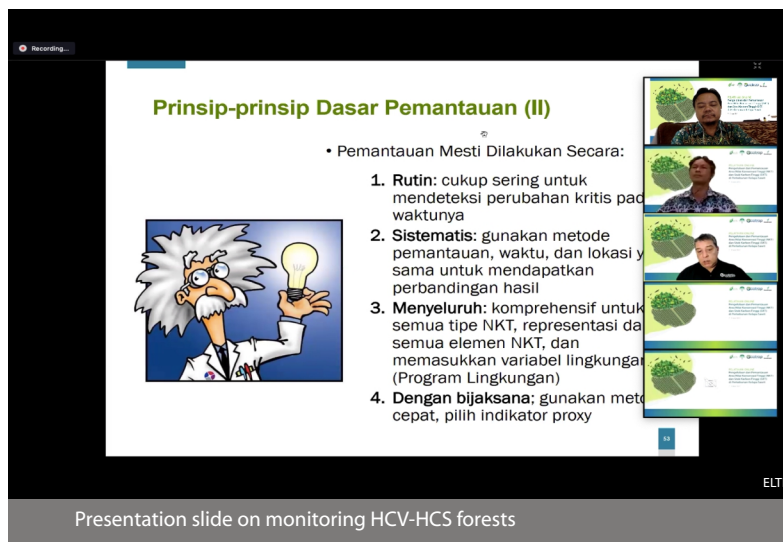
Course Participants:

A total of 126 participants attended the online training from across Indonesia. Participants included representatives from palm oil companies from the following provinces and cities: West Kalimantan, Central Kalimantan, East Kalimantan, Aceh, Bangka Belitung, Bengkulu, Jambi, West Java, East Java, Lampung, Riau, North Sumatra, South Sumatra, Yogyakarta and Papua, as well as Jakarta and Bogor. The training was also attended by representatives from government institutions, NGOs, and universities. There was also one participant who attended by special arrangement from the HZ University of Applied Sciences, Ecotrop's partner organization in the Netherlands.

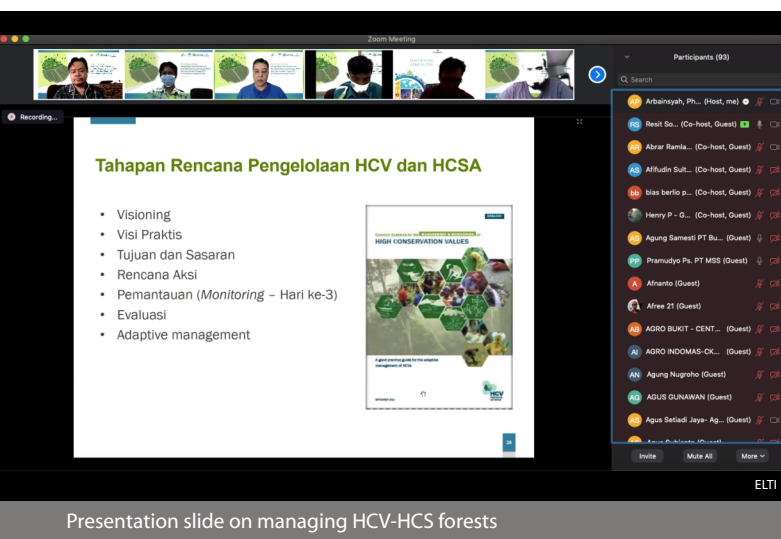




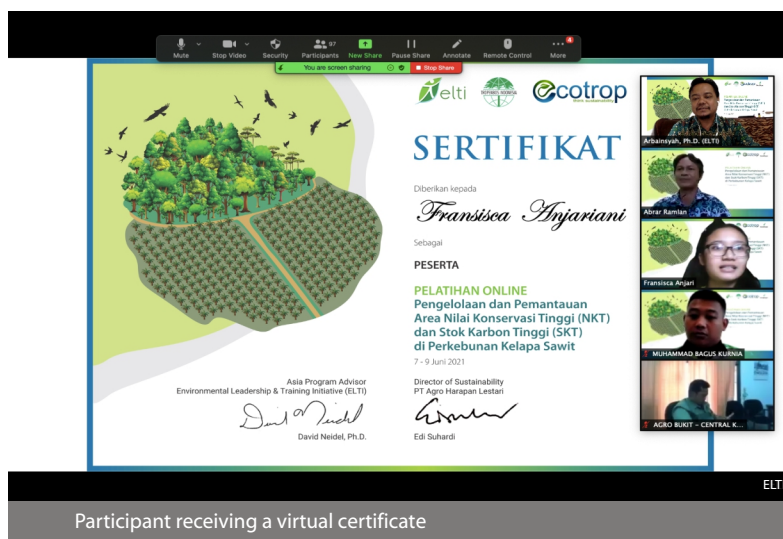
Presentation slide introducing HCV-HCS concepts



Presentation slide on monitoring HCV-HCS forests



Presentation slide on managing HCV-HCS forests



Participant receiving a virtual certificate

Follow-up:

Many of the participants from oil palm companies who joined the training as part of a group have started practicing HCV-HCS management and monitoring in their respective locations. A WhatsApp group was established during the training to help provide continued support and many participants have been actively following up with each other, as well as with the organizers. Some of the training participants have also asked ELTI and Goodhope to hold a follow-up, field-based training in the future to further enhance their knowledge of these important approaches or to help train other members of their plantation staff.

This event received the generous support of Arcadia - a charitable fund of Lisbet Rausing and Peter Baldwin - and the Yale Poorvu Center for Teaching and Learning.