

## COURSE REPORT

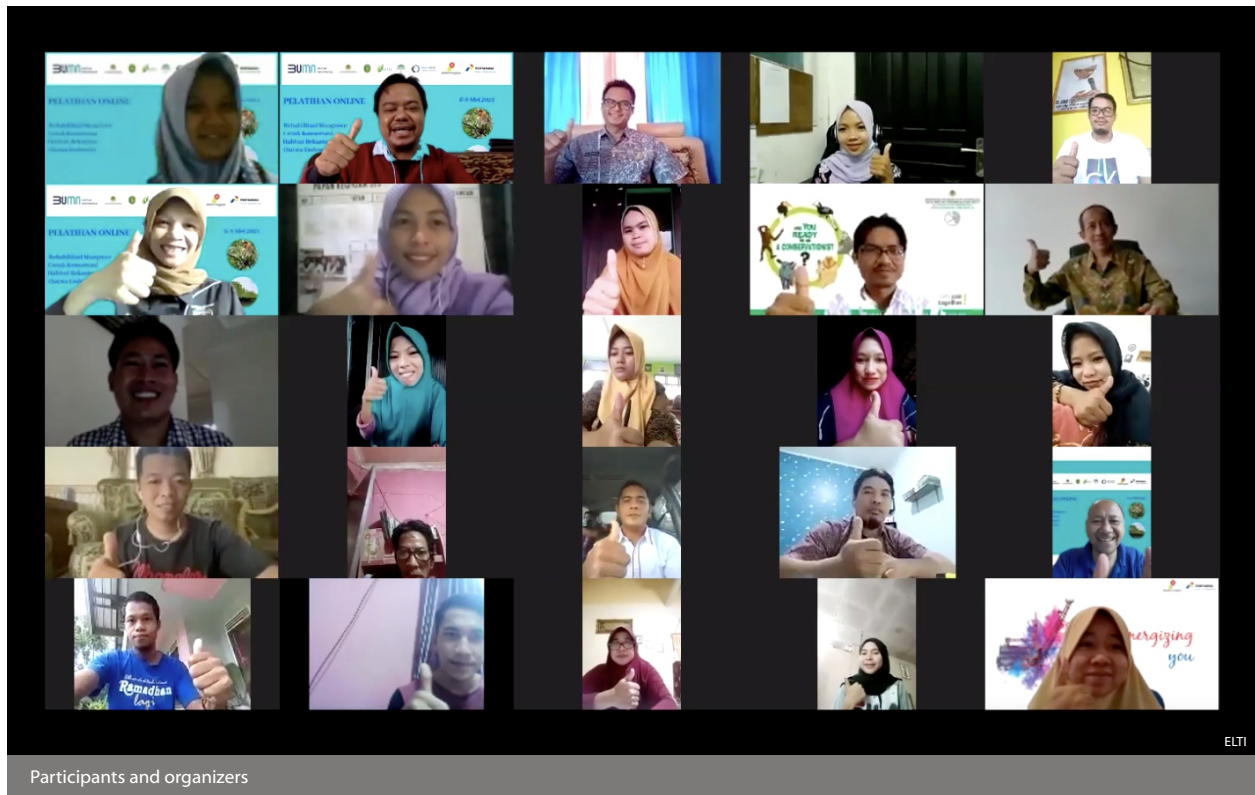
# MANGROVE REHABILITATION FOR PROBOSCIS MONKEY HABITAT CONSERVATION

May 6-8, 2021

Samboja, East Kalimantan, Indonesia

An online course co-organized by:

Environmental Leadership & Training Initiative (ELTI),  
Tropenbos Indonesia (TI),  
State-owned Enterprises (BUMN untuk Indonesia),  
Research & Development Institute for Natural Resource Conservation Technology (BALITEK-KSDA),  
Pemerintah Kutai Kartanegara,  
Blue Forest Foundation (BFF) and  
Pertamina Hulu Mahakam (PHM)



**Background:** Proboscis monkeys (*Nasalis larvatus*) are endemic to the island of Borneo. The majority of proboscis monkeys, which live in mangroves and coastal riparian areas, are found outside of formal protected areas. Over the last several decades, their population has been steadily declining primarily due to habitat loss resulting from logging, smallholder agriculture, mining, the development of shrimp & fish ponds, and other

ELTI is an initiative of: **Yale SCHOOL OF THE ENVIRONMENT**



land use change. Proboscis monkeys are currently classified as endangered. Conserving existing forest is an important first step to ensuring the long-term survival of the species, but rehabilitation of degraded forests is also needed to increase habitat area and increase connectivity. This online training aims to Increase the capacity of local stakeholders in the Mahakam Delta to actively engage in these efforts.

#### **Course Objectives:**

- Provide background information on the proboscis monkey and its ecology.
- Discuss the current conservation status of proboscis monkeys.
- Begin developing a habitat conservation and restoration program for proboscis monkeys in the Mahakam Delta.

#### **Course Format:**

The delivery and management of the online course was facilitated by Dr. Arbainsyah (ELTI Indonesian Program Coordinator), Mr. Sulton Afifudin (ELTI Research Assistant), and Mrs. Riana Rahma Ningrum (ELTI alumni). The three-day online course was divided into three thematic modules, each of which was covered during one day of the training.



Dr. Edi Purwanto (TI) providing an introduction to the concept of mangrove rehabilitation



Mr. Dedy Wahyudiansyah representing the Head of the Anggana Subdistrict while opening the online training



Dr. Arbainsyah moderating one of the sessions

### Module 1:

- Opening
- Getting to know the proboscis monkey and relevant conservation efforts
- Discussion

### Module 2:

- Mangrove conservation of proboscis monkey habitat
- Management problems and challenges
- Discussion

### Module 3:

- Carrying out mangrove rehabilitation to protect proboscis monkey habitat
- Discussion
- Closing

The online course materials was held in Indonesian and included interactive presentations and videos that were made available via a WhatsApp group platform. Live sessions with resource people Dr. Tri Atmoko (BALITEK KSDA) and Mr. Yusran Nurdin Massa (BFF) were held on Zoom. A PDF reference booklet, entitled "*Rehabilitasi Mangrove Untuk Konservasi Bekantan (Satwa Endemik)* [*Mangrove Rehabilitation for Proboscis Monkey (Endemic Wildlife) Habitat Conservation*]" was also produced and made available to participants.

### Course Participants:

A total of 37 participants attended the online training. Participants included representatives from government, academia, community groups, NGOs, as well as staff members from Pertamina Hulu Mahakam.

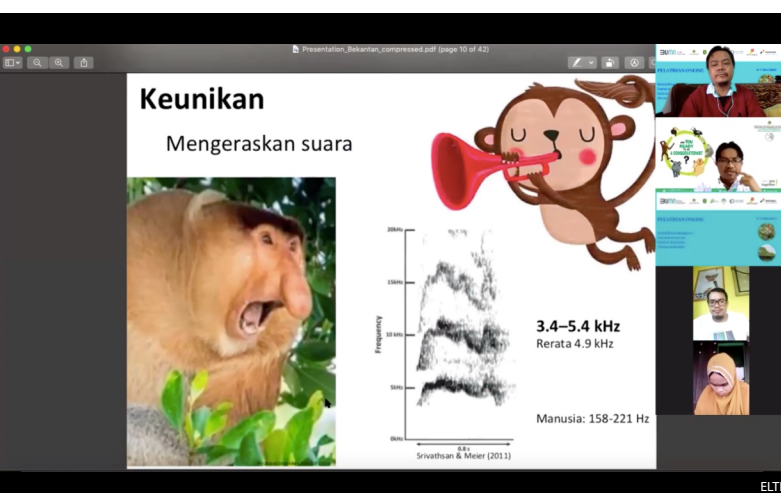




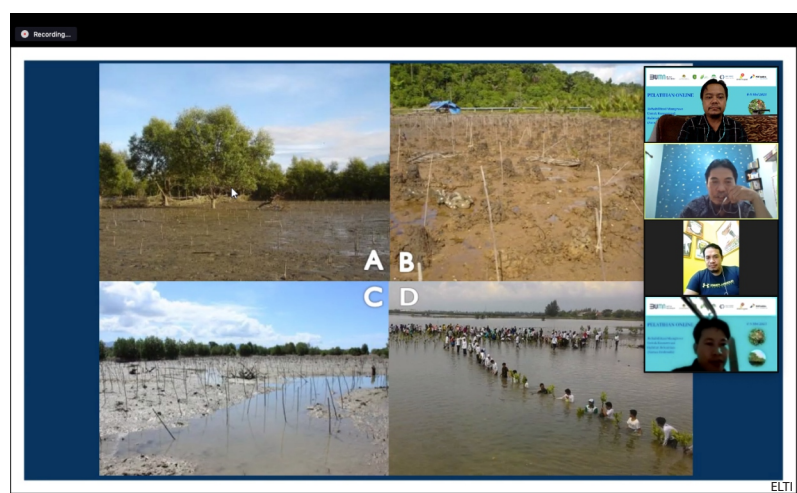
Dr. Tri Atmoko (BALITEK-KSDA) presenting about the proboscis monkey conservation efforts



Mr. Yusran Nurdin Massa (BFF) presenting about mangrove rehabilitation



Presentation slide about proboscis monkeys vocalizations



Presentation slide on mangrove rehabilitation

### Follow-up:

A WhatsApp group was established during the online training and participants have been actively following up with each other, as well as with the organizers and resource people. PHM will continue to developing a habitat conservation and restoration program for proboscis monkeys in the Mahakam Delta. Some of the online training participants have also asked ELTI and PHM to hold a follow-up field-based training on non-timber forest products at some point in the future.

*This event received the generous support of Arcadia - a charitable fund of Lisbet Rausing and Peter Baldwin - and the Yale Poorvu Center for Teaching and Learning.*